

First Article Inspection Report Form 1: Part Number Accountability

1. Part Number SAMPLE SM PART	2. Part Name SAMPLE SM PART	3. Serial/Lot Number N/A	4. FAI Report Number SAMPLE FAI
5. Part Revision Level C1	6. Drawing Number SAMPLE SM PART	7. Drawing revision level C1	8. Additional Changes N/A
9. Manufacturing Process Reference (WO#) PL JOB# SAMPLE FAI	10. Organization Name PROTOLABS	11. Supplier Code N/A	12. P.O. Number SAMPLE PO
13. Detail FAI <b style="font-size: 2em; text-align: center;">X Assembly FAI	14. Full FAI <b style="font-size: 2em; text-align: center;">X Partial FAI Reason for Partial FAI:		Baseline Part Number including revision level
a) if above part number is a detail part only, go to Field 19 b) if above part number is an assembly, go to the "INDEX" section below.			
INDEX of part numbers or sub-assembly numbers required to make the assembly noted above.			
15. Part Number	16. Part Name	17. Part Serial Number	18. FAI Report Number
1) Signature indicates that all characteristics are accounted for; meet drawing requirements or are properly documented for disposition.			
2) Also indicate if the FAI is complete per Section 5.4: FAI complete <input checked="" type="checkbox"/> FAI not Complete <input type="checkbox"/>			
19. Report Completed By: Jim Worth			20. Date 2/2/2024
21. Report Reviewed by (Quality Representative):			22. Date
23. Customer Approval and Stamp (if applicable):			24. Date
FAI Status: <input type="checkbox"/> FAI Acceptable <input type="checkbox"/> FAI Pending <input type="checkbox"/> FAI Rejected			

First Article Inspection Report

Form 2: Product Accountability - Raw Material, Specifications & Special Process(es) and Functional Testing

1. Part Number SAMPLE SM PART		2 Part Name SAMPLE SM PART		3. Serial / Lot Number N/A		4. FAI Report Number SAMPLE FAI
5. Material or Process Name	6. Specification Number & Revision No.		7. Code	8. Special Process Supplier Code	9. Customer Approval Verification (Yes/No/NA)	10. Certificate of Conformance number
Material: Aluminum .080"	5052-H32 per ASTM B209		N/A	ALL METALS INC.	N/A	HEAT# 120109643
Finish: Chromate Clear	MIL-DTL-5541 TY II CLASS 1A		N/A	JMD INDUSTRIES INC.	N/A	PO# 123456
11. Functional Test Procedure Number	12. Acceptance report number, if applicable					
13. Comments						
14. Prepared By Jim Worth				15. Date 2/2/2024		

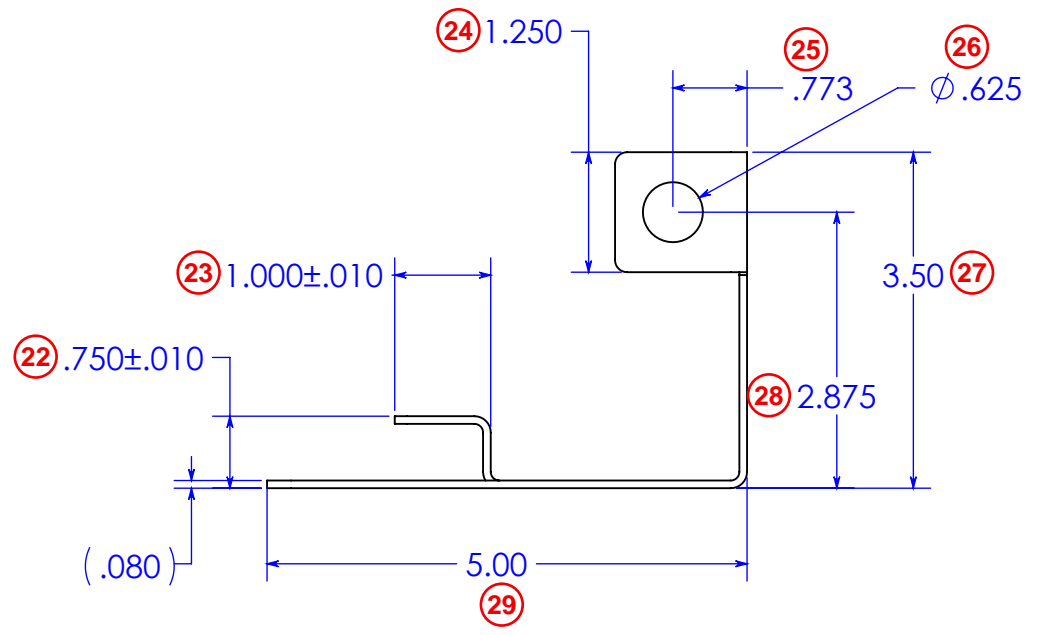
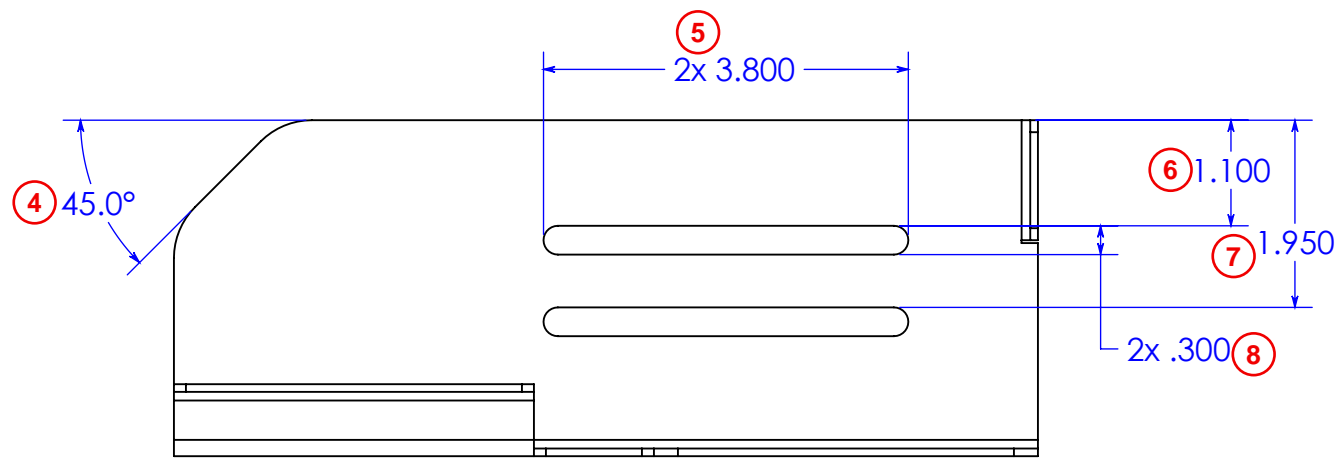
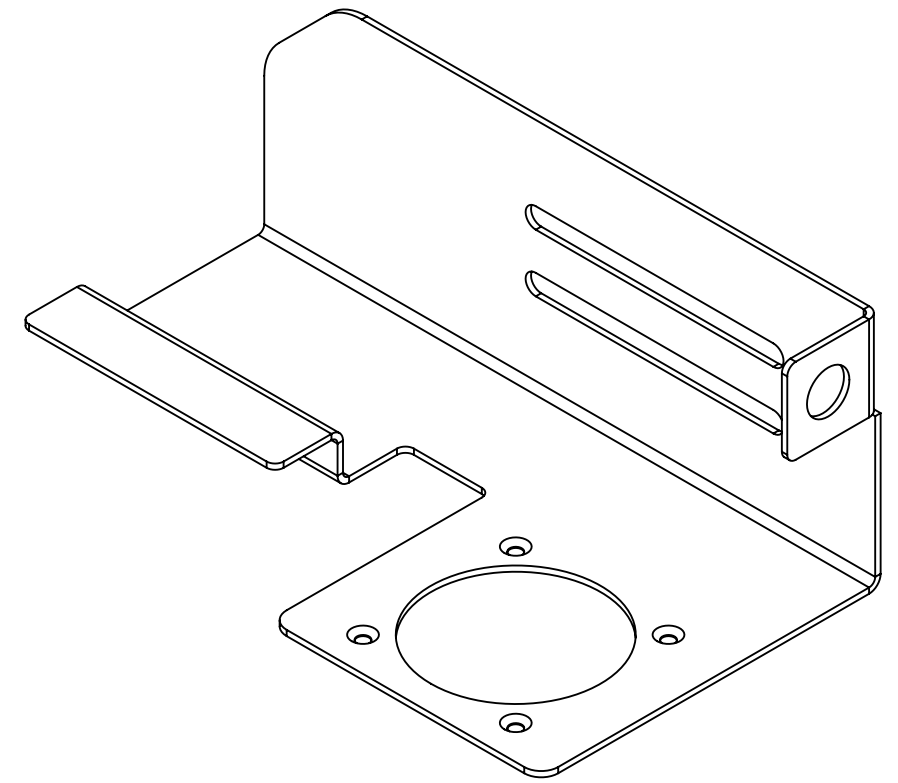
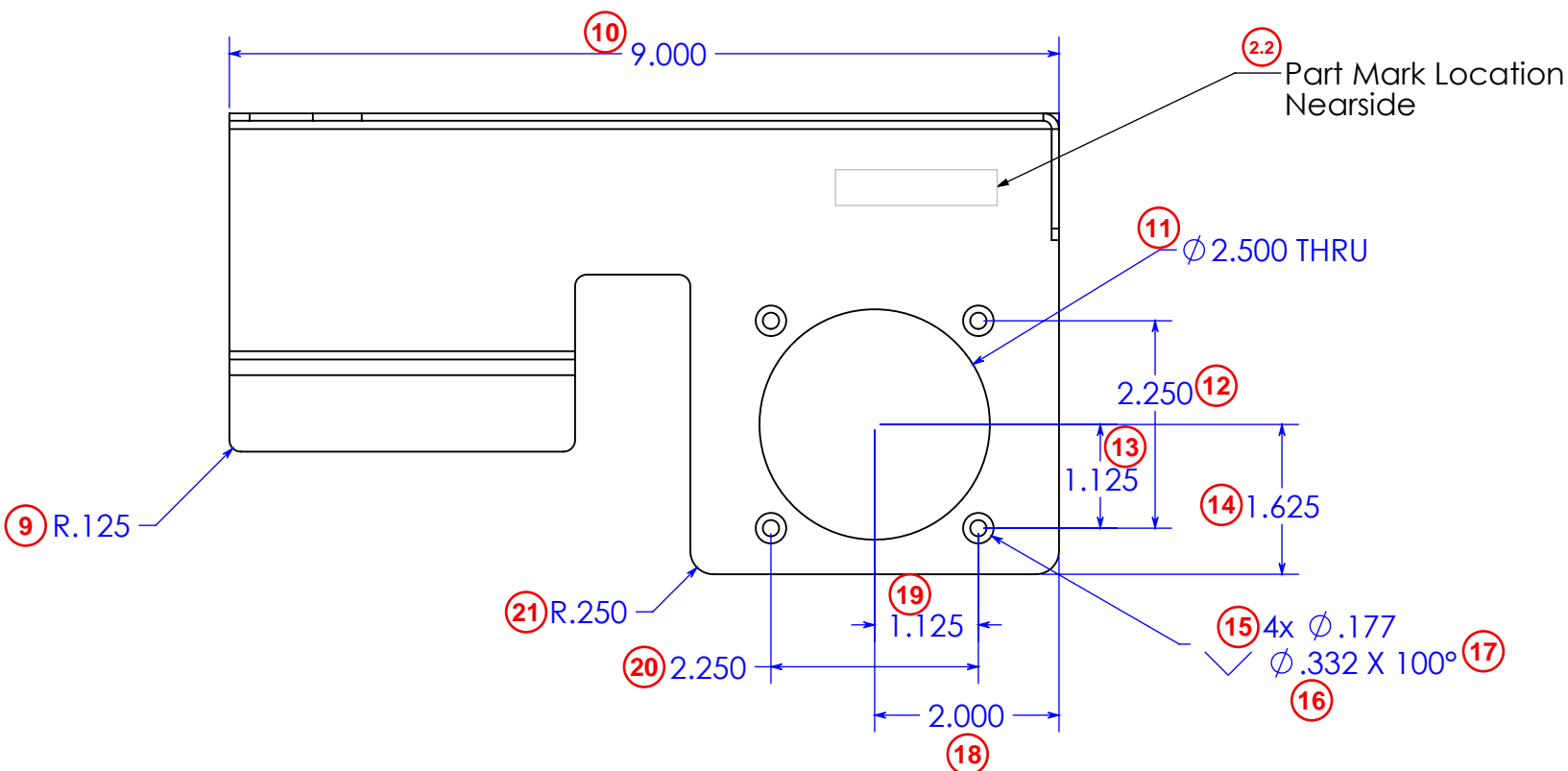
First Article Inspection Report
Form 3: Characteristic Accountability, Verification and Compatibility Evaluation

1. Part Number		2. Part Name					3. Serial/Lot Number	4. FAI Report		
SAMPLE SM PART		SAMPLE SM PART					N/A	SAMPLE FAI		
Characteristic Accountability			Inspection / Test Results			Other Fields				
5. Char No.	6. Reference Location	7. Characteristic Designator	8. Requirement	8a. UoM	8b. Upper Limit	8c. Lower Limit	9. Results	10. Designed Tooling	11. Non-Conformance Number	14. Notes
1	FAI Sample SM Part Rev C1 pg.1		MATERIAL; AL ALY PER ASTM B209, 5052-H32, .080 THK				0.078			
2.1	FAI Sample SM Part Rev C1 pg.1		MARK PART NUMBER AND DRAWING REVISION WITH .12 HIGH CHARACTERS USING CONTRASTING COLOR EPOXY BASE INK PER MIL-STD-130. LOCATE APPROX WHERE SHOWN				Complies			
2.2	FAI Sample SM Part Rev C1 pg.1		PART MARK LOCATION				Complies			
3	FAI Sample SM Part Rev C1 pg.1		CHEMICAL FILM TREAT ALL SURFACED PER MIL-DTL-5541, CLASS 1A (CLEAR ROHS)				Complies			
4	FAI Sample SM Part Rev C1 pg.1		45.0	deg	46.0	44.0	45			
5	FAI Sample SM Part Rev C1 pg.1		3.800	in	3.805	3.795	3.797			
6	FAI Sample SM Part Rev C1 pg.1		1.100	in	1.105	1.095	1.102			
7	FAI Sample SM Part Rev C1 pg.1		1.950	in	1.955	1.945	1.952			
8	FAI Sample SM Part Rev C1 pg.1		.300	in	0.305	0.295	0.297			
9	FAI Sample SM Part Rev C1 pg.1		R.125	in	0.130	0.120	0.125			
10	FAI Sample SM Part Rev C1 pg.1		9.000	in	9.010	8.990	8.994			
11	FAI Sample SM Part Rev C1 pg.1		Ø2.500	in	2.505	2.495	2.503			
12	FAI Sample SM Part Rev C1 pg.1		2.250	in	2.255	2.245	2.247			
13	FAI Sample SM Part Rev C1 pg.1		1.125	deg	1.130	1.120	1.124			
14	FAI Sample SM Part Rev C1 pg.1		1.625	in	1.630	1.620	1.621			
15	FAI Sample SM Part Rev C1 pg.1		Ø.177	in	0.182	0.172	0.179			
16	FAI Sample SM Part Rev C1 pg.1		Ø.332	in	0.337	0.327	0.336			
17	FAI Sample SM Part Rev C1 pg.1		100	deg	101.000	99.000	100			
18	FAI Sample SM Part Rev C1 pg.1		2.000	uv	2.005	1.995	2.001			
19	FAI Sample SM Part Rev C1 pg.1		1.125	in	1.130	1.120	1.124			
20	FAI Sample SM Part Rev C1 pg.1		2.250	deg	2.255	2.245	2.251			
21	FAI Sample SM Part Rev C1 pg.1		R.250	in	0.255	0.245	0.25			
22	FAI Sample SM Part Rev C1 pg.1		.750	in	0.760	0.740	0.759			
23	FAI Sample SM Part Rev C1 pg.1		1.000	in	1.010	0.990	0.996			
24	FAI Sample SM Part Rev C1 pg.1		1.250	in	1.255	1.245	1.251			

Form 3: Characteristic Accountability, Verification and Compatibility Evaluation

1. Part Number SAMPLE SM PART				2. Part Name SAMPLE SM PART				3. Serial/Lot Number N/A		4. FAI Report SAMPLE FAI	
Characteristic Accountability						Inspection / Test Results			Other Fields		
5. Char No.	6. Reference Location	7. Characteristic Designator	8. Requirement	8a. UoM	8b. Upper Limit	8c. Lower Limit	9. Results	10. Designed Tooling	11. Non-Conformance Number	14. Notes	
25	FAI Sample SM Part Rev C1 pg.1		.773	in	0.783	0.763	0.782				
26	FAI Sample SM Part Rev C1 pg.1		Ø.625	in	0.630	0.620	0.623				
27	FAI Sample SM Part Rev C1 pg.1		3.50	in	3.520	3.480	3.51				
28	FAI Sample SM Part Rev C1 pg.1		2.875	in	2.890	2.860	2.881				
29	FAI Sample SM Part Rev C1 pg.1		5.00	in	5.020	4.980	5.001				
The signature indicates that all characteristics are accounted for; meet drawing requirements or are properly documented for disposition.											
12. Prepared By Jim Worth									13. Date 2/2/2024		

D
C
B
A



1. ① MATERIAL: AL ALY PER ASTM B209, 5052-H32, .080 THK
2. ② MARK PART NUMBER AND DRAWING REVISION WITH .12 HIGH
 ②.1 CHARACTERS USING CONTRASTING COLOR EPOXY BASE INK PER MIL-STD-130. LOCATE APPROX WHERE SHOWN
3. ③ CHEMICAL FILM TREAT ALL SURFACES PER MIL-DTL-5541, CLASS 1A
 (CLEAR ROHS)