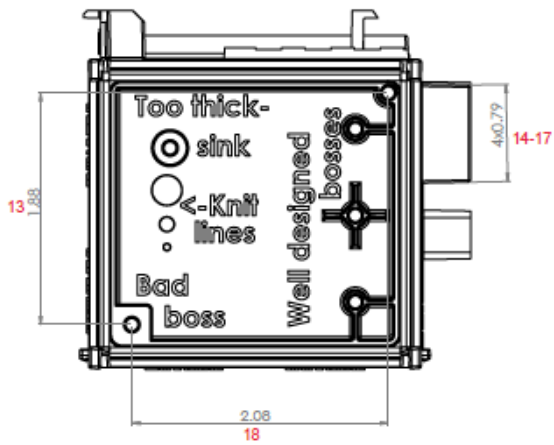
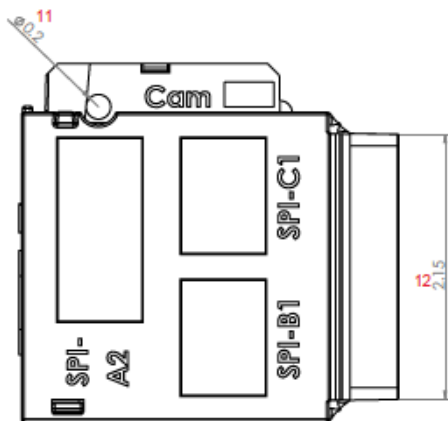
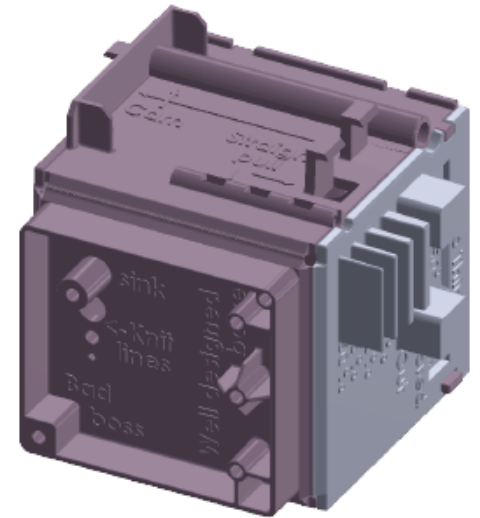
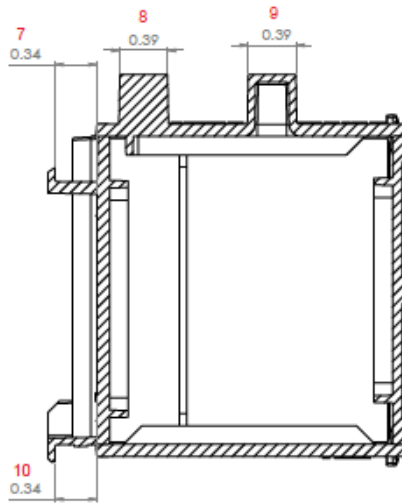
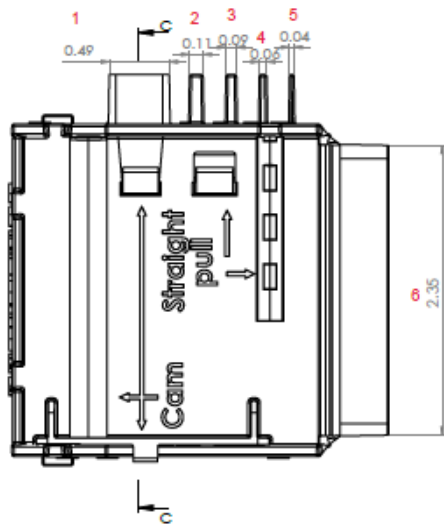


Part Name **Design Cube**
 Part # **1477-5838-009**
 Rev. **A**
 Order # **-**

Customer **Protolabs**
 Date **May 31, 2024**
 Inspector **Gadget Brown**
 Item # **-**

Material Tol **0.005**
 Measurement Unit **IN**

INSPECTION		Results are reported in: Inches				Part 1	Part 2	Part 3	Part 4	Part 5						
EQUIPMENT USED	DIM #	NOMINAL	+TOL	-TOL	DESCRIPTION	Actual	Actual	Actual	Actual	Actual						
CMM	1	0.49	0.005	0.005	Distance	0.487	0.488	0.486	0.486	0.485						
CMM	2	0.1	0.005	0.005	Distance	0.102	0.105	0.104	0.104	0.104						
CMM	3	0.09	0.005	0.005	Distance	0.089	0.093	0.092	0.090	0.087						
CMM	4	0.06	0.005	0.005	Distance	0.064	0.065	0.063	0.060	0.060						
CMM	5	0.04	0.005	0.005	Distance	0.038	0.039	0.041	0.040	0.037						
CMM	6	2.35	0.015	0.015	Distance	2.360	2.360	2.359	2.363	2.361						
INSIDE MIC	7	0.34	0.005	0.005	Distance	0.340	0.339	0.338	0.340	0.339						
CMM	8	0.39	0.005	0.005	Distance	0.391	0.390	0.389	0.391	0.390						
CMM	9	0.39	0.005	0.005	Distance	0.389	0.387	0.389	0.388	0.388						
CMM	10	0.34	0.005	0.005	Distance	0.339	0.338	0.339	0.340	0.339						
PIN GAUGE	11	0.2	0.005	0.005	Diameter	0.199	0.201	0.202	0.200	0.201						
CMM	12	2.15	0.014	0.014	Distance	2.140	2.145	2.143	2.143	2.141						
VMM	13	1.88	0.012	0.012	Distance	1.881	1.882	1.881	1.881	1.883						
CMM	14	0.79	0.007	0.007	Distance	0.792	0.793	0.792	0.794	0.793						
CMM	15	0.79	0.007	0.007	Distance	0.793	0.795	0.792	0.793	0.794						
CMM	16	0.79	0.007	0.007	Distance	0.794	0.795	0.794	0.794	0.795						
CMM	17	0.79	0.007	0.007	Distance	0.792	0.791	0.790	0.792	0.793						
VMM	18	2.08	0.013	0.013	Distance	2.090	2.089	2.091	2.093	2.092						



DATE	DESCRIPTION	BY	CHKD BY	APP. BY	DATE

Part Name: Cube assembly (1)¹